

Reference: KRM12SF4LRAS

EAN13: 8057730870825

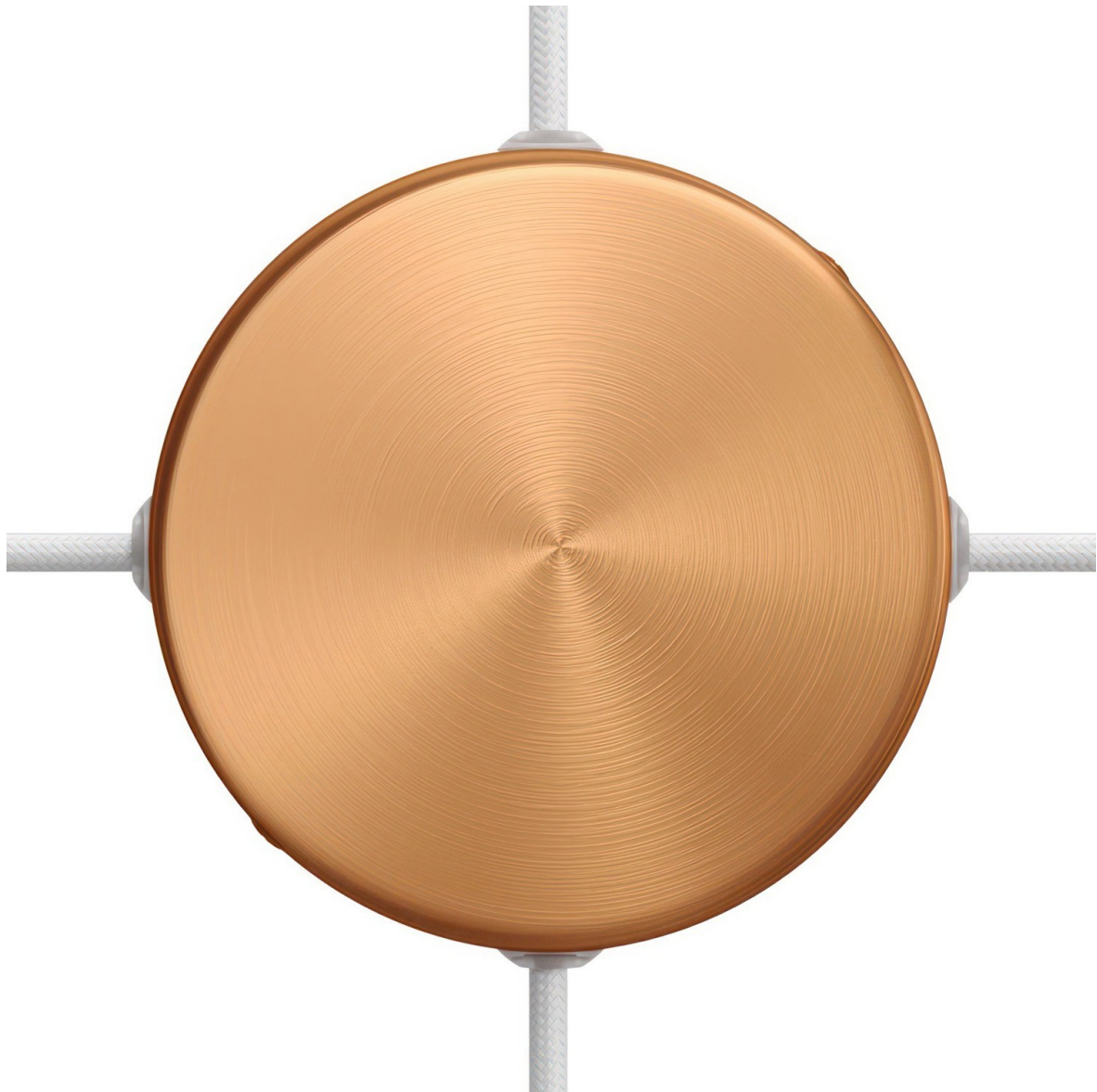
Product title:

Classic Round Metal Ceiling Canopy Kit - Blank with 4 side holes

Product attributes:

Finish: Glossy white, Matt White, Black, Chrome, Copper, Brass, Black pearl, Brushed titanium, Brushed copper, Brushed bronze, Painted dark rust

Product image:



Product price:

\$8.20 tax included

Product short description:

Our classic ceiling canopy with no center hole and 4 side holes. There are 4 side holes on opposite sides of each other. Use this canopy to link multiple strands of daisy chained pendant lights, daisy chained wall sconces, or as a blank to cover junction boxes.

These single hole ceiling canopies are 4.7 inches in diameter. Large enough to cover a standard junction box. They have a height of 1 inch, which allows plenty of room for wiring if you choose to mount these to a wall or ceiling without using a j-box. There is no center hole. And the 4 side holes are roughly 1/2 inch in diameter.

All of our ceiling canopies are designed to work with our round and twisted pendant light cloth covered wire color cord. So mix and match your favorite color cable with the ceiling canopy of your choice. Or you can make your own wall sconce by matching a canopy with your choice of light bulb socket, extension tube, and/or elbow pipe! So pull out that inner lighting designer and get creative with our lamp parts.

What's in the box? This single hole ceiling canopy with 2 side holes comes with: the canopy; a crossbar for attaching the ceiling canopy to the junction box, wall or ceiling; two screws for attaching to a wall; two screws for attaching the mounting plate to the sides of the ceiling canopy; 4 side hole plugs; and 4 side hole grommets.

Be sure to check out all of lamp parts here at Creative Cables. You'll find an extensive selection of everything from cloth covered wire, unique XL LED light bulbs, light bulb sockets and more.

Product description:

Technical specifications Classic Round Metal Ceiling Canopy Kit with 4 side holes:

Canopy diameter: 4.7 inches (120 mm)

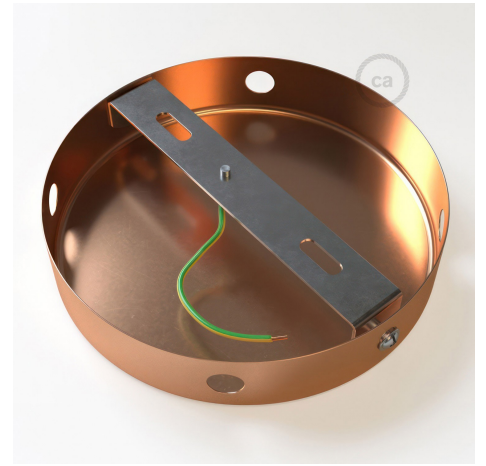
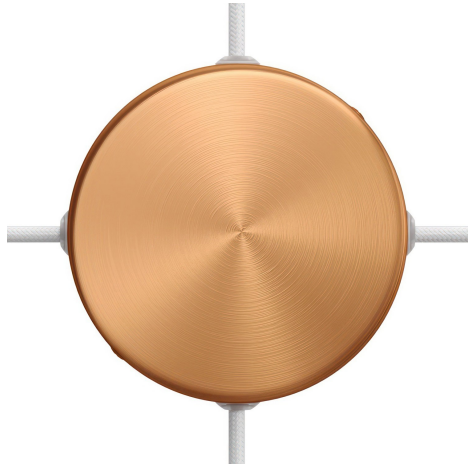
Hole diameters: roughly 1/2 inch (10 mm)

Material: metal

Product features:

Material: Metal

Product gallery:



x4

x4

